

# City of Tucson Water Eastside Satellite Center

Tucson, Arizona



## SOUTH ENTRY VIEW

- \* RAIN WATER COLLECTION
- \* SHADE TRELLIS
- \* DESERT OASIS
- \* RECYCLED STEEL COMPONENTS

## SUSTAINABLE DESIGN ELEMENTS

**Daylighting:** offsets 10.57% energy usage

**Siting:** maximizes natural lighting, minimize solar heat gain

**Rainwater Harvesting:** via rooftop gutters to cisterns

**Xeriscaping:** eliminates need for potable water for irrigation

**Heat-Island Reduction:** solar reflective roofing

**Energy Cost/Square Foot:** \$0.99

**Building/Space Type:** Office, Operations and Warehouse

**Total Square Footage of Building:** 20,041

## KEY RESULTS

**Energy Use Intensity (EUI) =** 128 kBtu/sf/yr

**Percent CO<sub>2</sub> Reduction =** 29%

**ENERGY STAR Design Rating =** 76

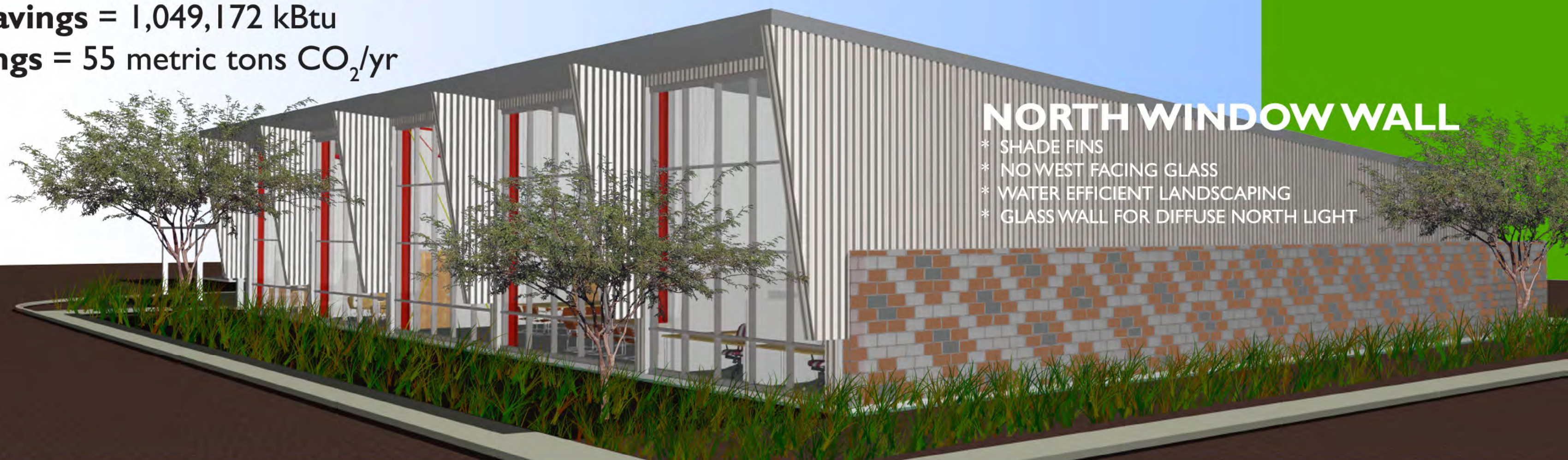
**Energy Savings =** 1,049,172 kBtu

**CO<sub>2</sub> Savings =** 55 metric tons CO<sub>2</sub>/yr



## INTERIOR VIEW

- \* NATURAL LIGHT TO ALL OFFICES, INCLUDING SKY LIGHTS
- \* VIEWS TO OUTSIDE
- \* EXPOSED STRUCTURE
- \* VISIBLE MECHANICAL SYSTEMS



## NORTH WINDOW WALL

- \* SHADE FINES
- \* NO WEST FACING GLASS
- \* WATER EFFICIENT LANDSCAPING
- \* GLASS WALL FOR DIFFUSE NORTH LIGHT