



DESIGNED TO EARN THE ENERGY STAR

The estimated energy performance for this design meets US EPA criteria. The building will be eligible for ENERGY STAR after maintaining superior performance for one year.

Architect, Structural Engineer and Planner:
SHW Group LLP Dallas, TX

Consultants:

MEP:

Estes McClure and Associates Inc.

Civil:

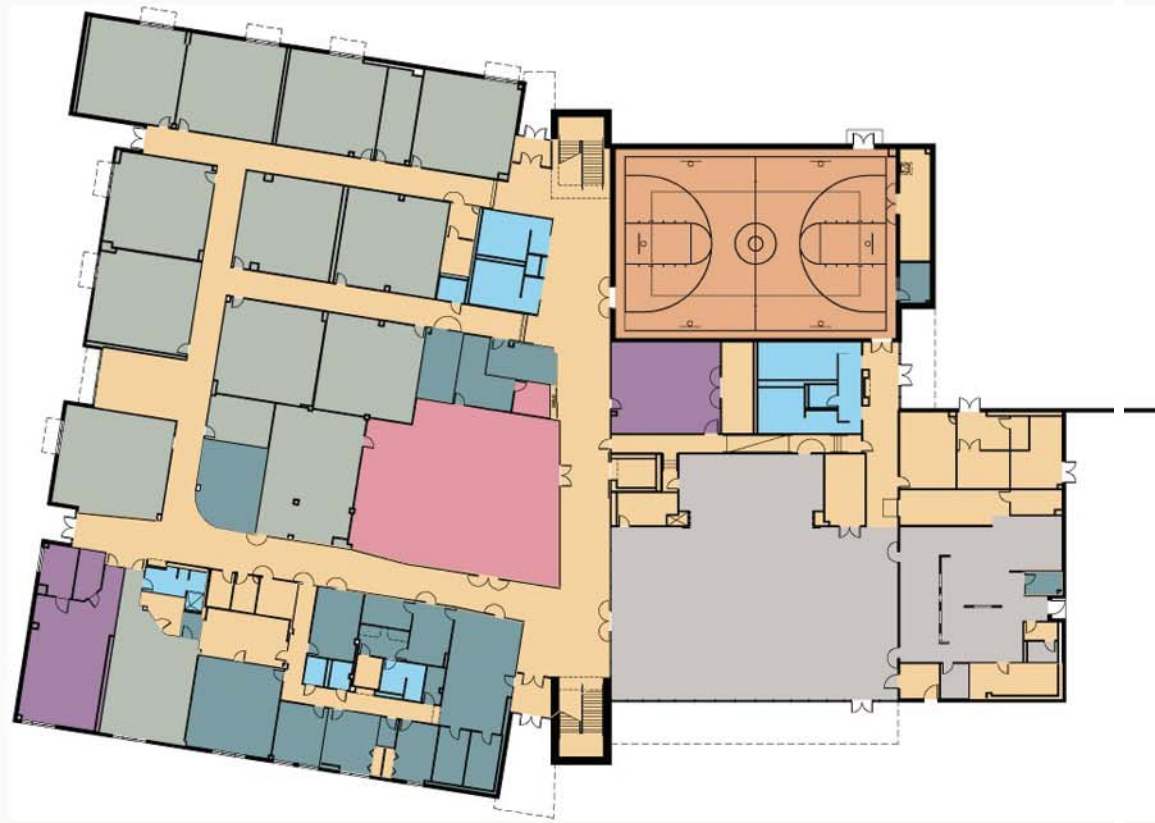
Glenn Engineering

Food Service:

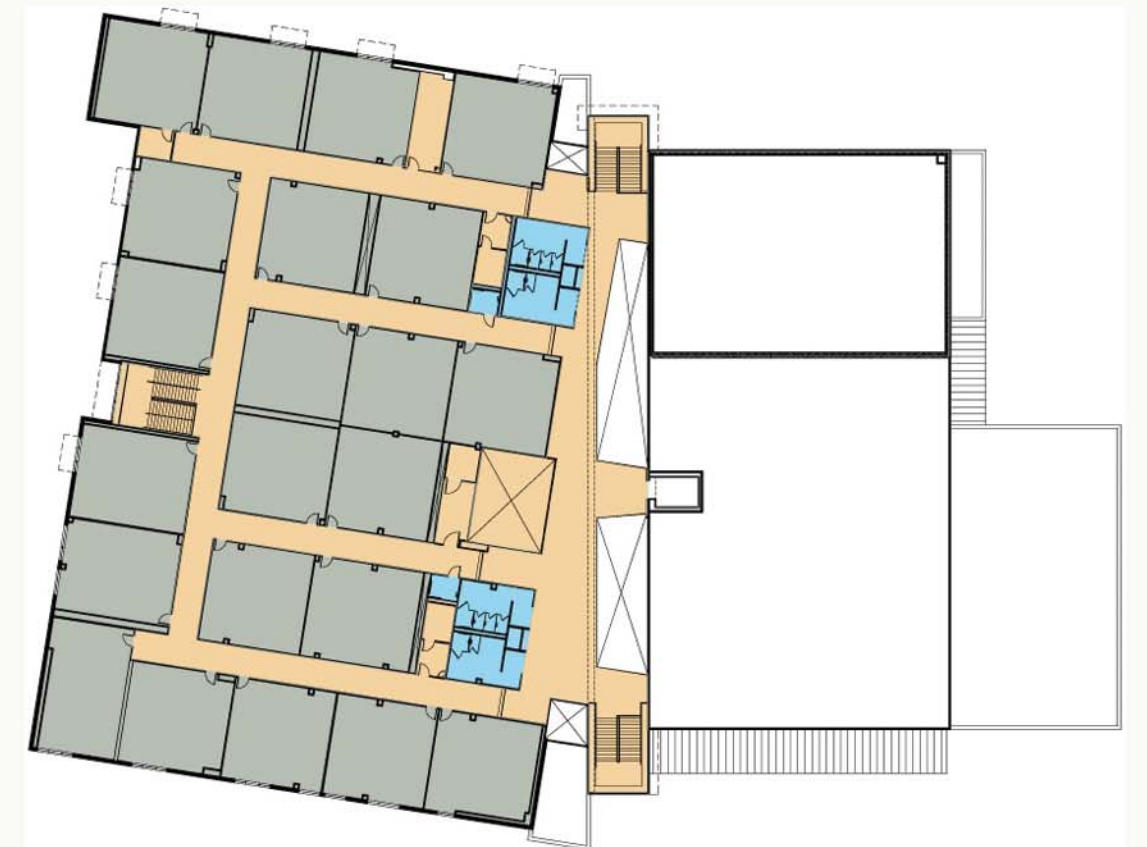
JMK Food Service Consulting & Design, LLC

Construction Management:

Hunt Construction Group



FLOOR ONE



FLOOR TWO



Nancy H. Strickland Intermediate School
Farmers Branch, Texas

Carrollton-Farmers Branch ISD
Superintendent:
Dr. Annette Griffin

Designed: 12/06

Estimated Completion: 8/08

Total Area: 81,853 SF

Shading, tinted exterior glass, recycled masonry content, passive solar in commons

Energy Cost/Sf: \$1.23 Per Square Foot

Energy Use Intensity (EUI) = 101.1 Kbtu/Sf/Yr

Energy Savings = 2,723,574 Kbtu

CO2 Savings = 312,700 Lbs CO2

Percent CO2 Reduction = 22%

