

# What's Up With the **HERS** Index? (Understanding Standard 301)

## Presenters:

**Brett Dillon**

The Dillon Group

[brett@thedillongroupinc.com](mailto:brett@thedillongroupinc.com)



**Ben Adams**

MaGrann Associates

[benadams@magrann.com](mailto:benadams@magrann.com)



# Topics

---

- **What are we talking about?**
- **Who's responsible?**
- **What's the impact?**
- **When does it happen?**
- **How will it affect me?**
  - **Or my program, clients, stakeholders, etc.**

# What Are We Talking About?

---

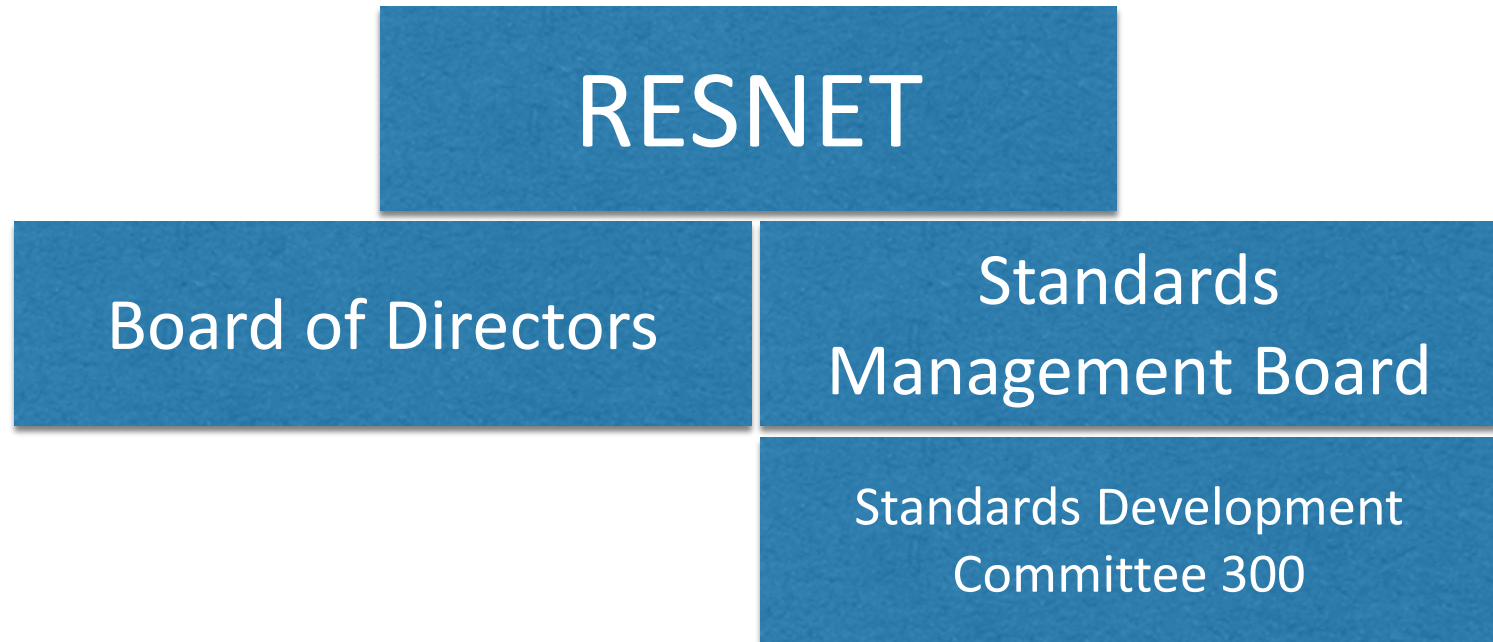
**“MINHERS”**



**“ANSI/ICC/RESNET 301-2014”**

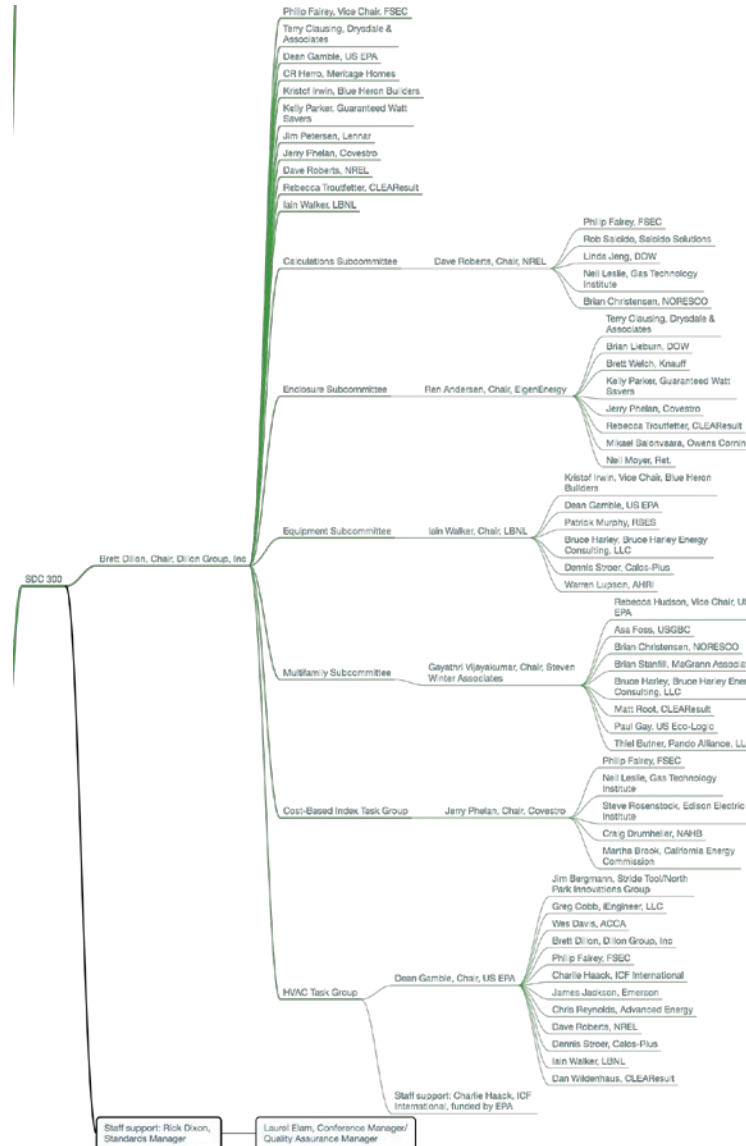
# Who Made this Change?

---





# ...with Input to Standards



# Why Change?

---

- **Better alignment with published code**
- **ANSI Standard Development Process**
  - **Public comments**

# What Changed?

---

- **Reference home became more efficient**
  - **Infiltration**
  - **Windows**
  - **Mechanical ventilation**
  - **Water heater inlet temperature**
- **Some changes are software specific**
  - **E.g. weather locations, input screens**



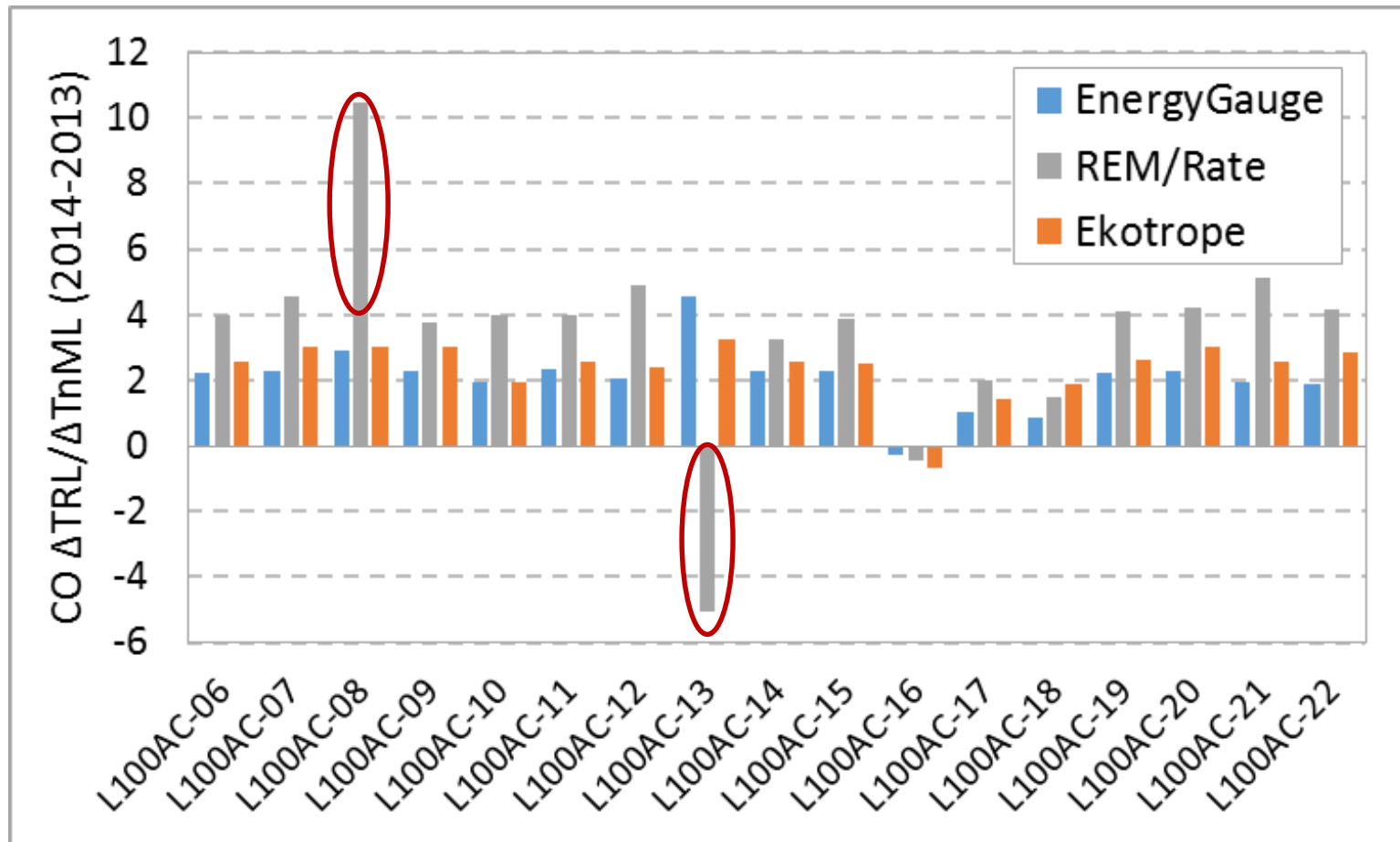
# Impact on Index Scores

---

- **A more efficient Reference Home changes the denominator of the HERS Index equation – increasing the score**
- **However, there are new technologies that were also incorporated that can reduce the score**
  - **E.g. hot water (distribution, waste heat recovery, fixtures, appliances)**

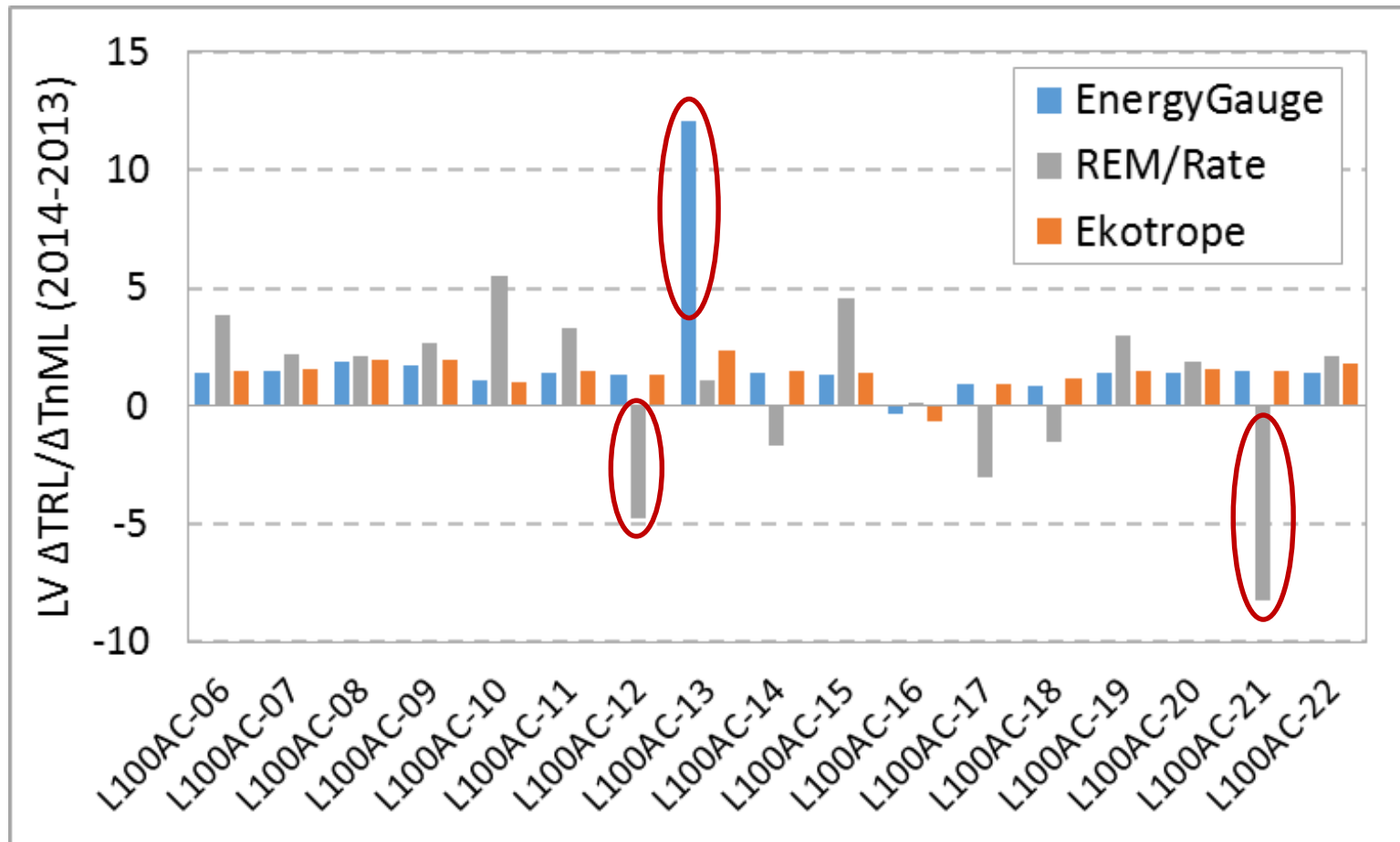
# Impact by Climate

## Cold climates



# Impact by Climate

## Hot climates



# Impact by Building Type

---

- **Score changes may be less in smaller homes and multifamily units**
  - **Especially in heating climates**

# When Does the Change Occur?

---

- Raters can currently use **either** the MINHERS version of the software **or** the ANSI/ICC/RESNET 301-2014 compliant software
- Effective January 1, 2017, **only ANSI/ICC/RESNET 301-2014** compliant software will be allowed for new projects
- A new sunset provision after which all ratings must be completed using the new standard
  - Permit date 6 months from version release
  - Currently in comment period

# Objectives

---

- **Increased consistency between HERS software tools**
- **Baseline consistent with specific published code reference**
- **Includes modifications needed for ratings to be used under IECC 2015 ERI path (R406) in addition to federal tax credits**
- **Enables number of new energy efficiency measures to be recognized and savings captured**

# Outcomes

---

- **Improved reliability, accuracy, and consistency of HERS Index for all**
- **Allows RESNET to be responsive to new efficiency technologies, modeling methodologies, codes & standards, and industry best practices**
  - **Via a rigorous ANSI process**

# Implications for Raters

---

- **Raters need to understand the technical underpinnings so they can interpret and communicate them effectively to the building community**
  - **Work with the new standard and software to assess impacts for clients**
  - **Work with building industry to help craft appropriate messaging**
- **Don't wait for the last minute!**



# Implications for Builders

---

- **Marketing references to specific or average scores may need to be updated**
- **Need an “elevator speech” prepared**
  - **Lots of good analogies (code, cars, etc.)**
- **No impact on national program qualification**
  - **Tax Credit, ENERGY STAR, LEED, etc.**
- **Be alert for any incentive program changes**

# Implications for ENERGY STAR

---

- **No impacts expected**
  - **ENERGY STAR Certified Homes uses a relative reference**

# Implications for Programs

---

- **Savings calculated relative to a User Defined Reference Home (UDRH) not expected to change**
  - **Savings relative to the HERS reference home may be different**
- **Programs using HERS score thresholds may need to shift qualification scores**
  - **Incentive parity**
  - **Cost effectiveness**
- **Use the transition period to test!**
  - **Enlist program raters**

# Questions?

---

**Thank you!**

**Discussion**